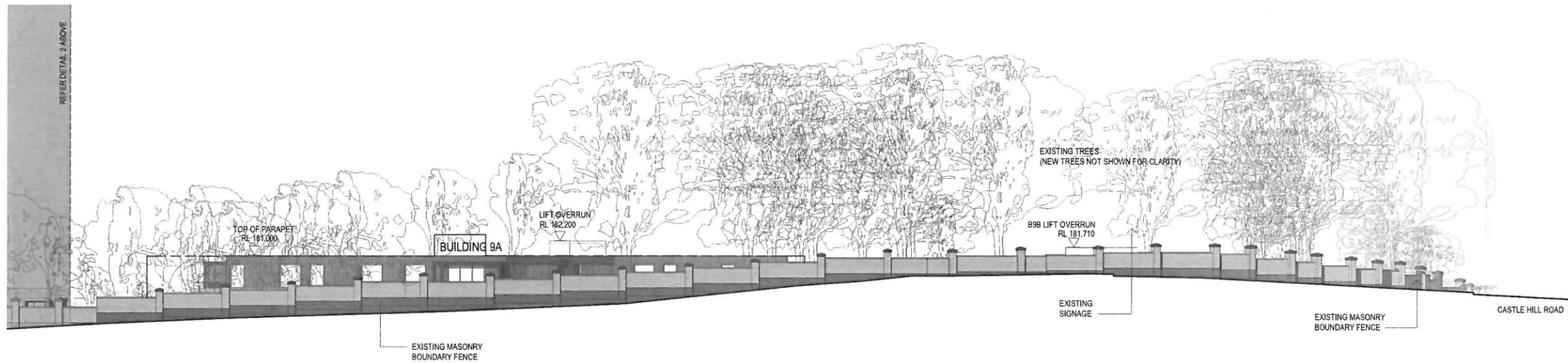
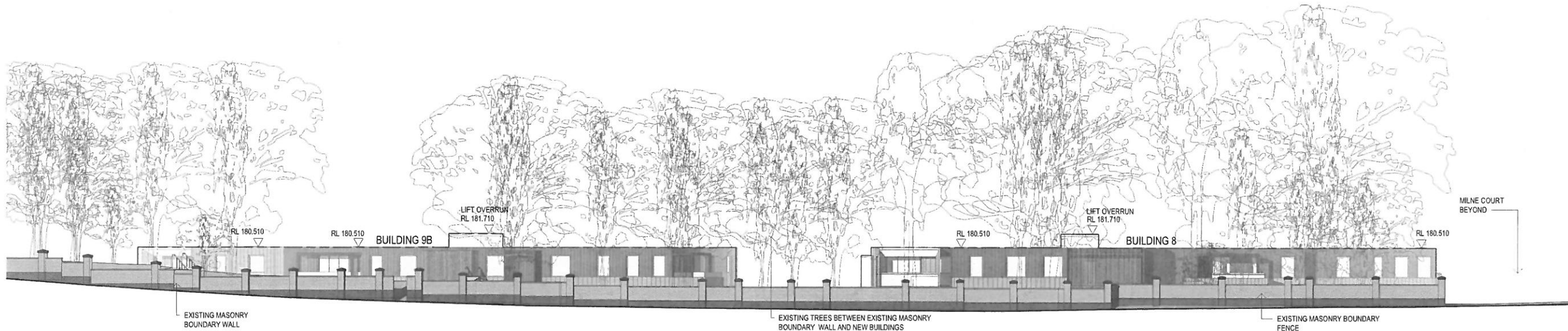


1 OLD NORTHERN ROAD ELEVATION
SCALE 1 : 200



2 OLD NORTHERN ROAD ELEVATION
SCALE 1 : 200



3 CASTLE HILL RD ELEVATION
SCALE 1 : 200

CONCEPTS AND INFORMATION CONTAINED IN THIS DRAWING ARE COPYRIGHT AND MAY NOT BE REPRODUCED IN WHOLE OR PART OR BY ANY MEDIUM, WITHOUT THE WRITTEN PERMISSION OF JACKSON TEECE. DO NOT SCALE THIS DRAWING. USE FIGURED DIMENSIONS ONLY. VERIFY ALL PROJECT DIMENSIONS BEFORE COMMENCING ON-SITE WORK OR OFF-SITE FABRICATION. NOTIFY JACKSON TEECE OF ANY DISCREPANCIES AND SEEK INSTRUCTIONS.

AMENDMENTS

ISSUE	DESCRIPTION	APPROVED	DATE
1	DEVELOPMENT APPLICATION	DL	04/02/19
2	AMENDED DEVELOPMENT APPLICATION	CA	31/06/20

NOTES

- MAXIMUM HEIGHT & CEILING HEIGHT CONTROL PLANES NOT SHOWN ON ELEVATIONS. FOR ADDITIONAL HEIGHT PLANE INFORMATION REFER TO DA-410 & RELEVANT SECTIONS
- THE BUILDING HEIGHT IS BELOW THE MAXIMUM HEIGHT PLANE OF 8.5m. THERE ARE MINOR HEIGHT LEVEL EXCEPTIONS WHICH ARE INDICATED ON THE 3D HEIGHT PLANE DRAWINGS DA-410. THE HIGHEST OF THESE, THE LIFT OVERRUN & PLANT ROOM IS INDICATED WITH AN RL ON DRAWING. AN EXCEPTION IS BUILDING 13 WITH AN ADDITIONAL FLOOR.
- COLOURS ON THE ELEVATIONS ARE INDICATIVE TO ASSIST INTERPRETATION OF MATERIAL DIFFERENCES. REFER TO THE MATERIAL PALETTE ON SHEET.
- ALL FACADE WINDOWS TO APARTMENTS ARE TYPICALLY DOUBLE-GLAZED AWNING WINDOWS, EXCEPT FOR GLAZED SLIDING DOOR & GLAZED FIXED PANELS.
- FOR MORE INFORMATION REFER TO INDIVIDUAL BUILDING ELEVATIONS.

LEGEND

--- EXTENT OF BUILDING ENVELOPE OF CLASS 1 APPLICATION

KEY PLAN



0 5 10
SCALE 1:200
THIS DRAWING ISSUE HAS BEEN REVIEWED FOR

DA ISSUE

APPROVED BY: CA
CHECKED BY: CW
CLIENT: ANGLICARE CASTLE HILL



DRAWING: STREET ELEVATIONS - OLD NORTHERN ROAD AND CASTLE HILL ROAD
DATE: 10/17/18
SCALE @ A1: 1 : 200
DRAWN: DK

PROJECT No. DISCP. DRAWING No. ISSUE
2016056 A DA-200 2

PROJECT: 201656 WESTERN ROAD

Lot 1, Pier 8-9, 23 Hickson Road
Walsh Bay New South Wales 2000 Australia
T 61 2 9290 2722 F 61 2 9290 1150
E sydney@jacksonteece.com
Jackson Teece Charitable Willer Pty Ltd
Trading as Jackson Teece
ABN 15 061 817 200
Nominated Architects: Damien Barker (0192), John Gow (0990), Derek Hodson (8315)

JACKSON TEECE

AMENDMENTS

ISSUE	DESCRIPTION	APPROVED	DATE
1	DEVELOPMENT APPLICATION	DL	04/02/19
2	AMENDED DEVELOPMENT APPLICATION	CA	31/08/20

NOTES

- LANDSCAPE IS NOT SHOWN ON ELEVATIONS TO SHOW FULL ELEVATION VIEW. REFER TO LANDSCAPE DOCUMENTS FOR NEW & EXISTING PLANTING.
- MAXIMUM HEIGHT & CEILING HEIGHT CONTROL PLANES ARE NOT SHOWN ON ELEVATIONS. FOR ADDITIONAL HEIGHT PLANE INFORMATION REFER TO DA-410 & RELEVANT SECTIONS.
- COLOURS ON THE ELEVATIONS ARE INDICATIVE TO ASSIST INTERPRETATION OF MATERIAL DIFFERENCES. REFER TO THE MATERIAL PALETTE ON SHEET.
- ALL FACADE WINDOWS TO APARTMENTS ARE TYPICALLY DOUBLE-GLAZED AWNING WINDOWS, EXCEPT FOR GLAZED SLIDING DOOR & GLAZED FIXED PANELS.

LEGEND

- EXISTING GROUND HEIGHT AT THE FACE OF THE ELEVATION SHOWN
- LOT BOUNDARY LINES
- HEIGHT PLANES
- EXTENT OF BUILDING ENVELOPE OF CLASS 1 APPLICATION

KEY PLAN



0 5 10
SCALE 1:200
THIS DRAWING ISSUE HAS BEEN REVIEWED FOR

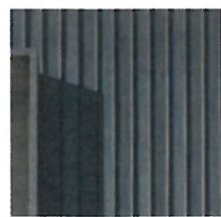
DA ISSUE

APPROVED BY: CA
CLIENT: ANGLICARE CASTLE HILL
CHECKED BY: CW
DRAWING: ELEVATIONS - BUILDING 8
Anglicare

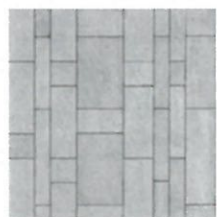
DATE: 10/17/18 SCALE @ A1: 1:200 DRAWN: RP
PROJECT No.: 2016056 A DISC.: DA-205 ISSUE: 2
PROJECT: 201656 WESTERN ROAD

Lot 1, Pier 8-9, 23 Hickson Road
Wah Bay New South Wales 2000 Australia
T 61 2 9290 2722 F 61 2 9290 1150
E: sydney@jacksonteece.com
Jackson Teece Chesterman Wilbur Pty Ltd
Trading as Jackson Teece
ABN 15 615 837 190
Nominated Architects: Damian Barker (8192), John Gow (5790), Daniel Hudson (8315)

JACKSON TEECE



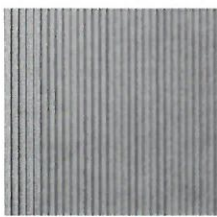
1 - WALL CLADDING



2 - WALL CLADDING



3 - WALL CLADDING



4 - WALL CLADDING



5 - CLADDING



6 - CLADDING



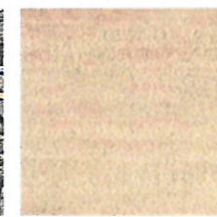
7 - ALUMINIUM WINDOW FRAME



8 - BALUSTRADE



9 - WALL CLADDING



10 - WALL CLADDING



11 - BALUSTRADES



12 - BATTENED LOUVRES



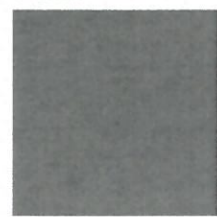
12 - BATTENED LOUVRES - TIMBER LOOK



13 - BATTENED LOUVRES - TIMBER LOOK B



14 - WALL CLADDING



20 - ROOF COLOUR



20 - ROOFING PROFILE

MATERIALS PALETTE

AMENDMENTS

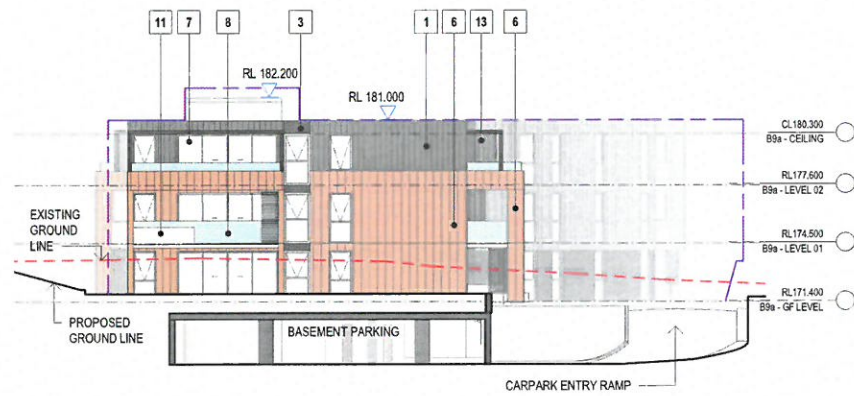
ISSUE	DESCRIPTION	APPROVED	DATE
1	DEVELOPMENT APPLICATION	DL	04/02/19
2	AMENDED DEVELOPMENT APPLICATION	CA	31/08/20



1 BUILDING 9A - NORTH ELEVATION



3 BUILDING 9A - EAST ELEVATION 1



2 BUILDING 9A - SOUTH ELEVATION



4 BUILDING 9A - WEST ELEVATION

NOTES

- LANDSCAPE IS NOT SHOWN ON ELEVATIONS TO SHOW FULL ELEVATION VIEW. REFER TO LANDSCAPE DOCUMENTS FOR NEW & EXISTING PLANTING.
- MAXIMUM HEIGHT & CEILING HEIGHT CONTROL PLANES ARE NOT SHOWN ON ELEVATIONS. FOR ADDITIONAL HEIGHT PLANE INFORMATION REFER TO DA-410 & RELEVANT SECTIONS.
- COLOURS ON THE ELEVATIONS ARE INDICATIVE TO ASSIST INTERPRETATION OF MATERIAL DIFFERENCES. REFER TO THE MATERIAL PALETTE ON SHEET.
- ALL FACADE WINDOWS TO APARTMENTS ARE TYPICALLY DOUBLE-GLAZED AWNING WINDOWS, EXCEPT FOR GLAZED SLIDING DOOR & GLAZED FIXED PANELS.

LEGEND

- EXISTING GROUND HEIGHT AT THE FACE OF THE ELEVATION SHOWN
- LOT BOUNDARY LINES
- HEIGHT PLANES
- EXTENT OF BUILDING ENVELOPE OF CLASS 1 APPLICATION

KEY PLAN



0 5 10
SCALE 1:200

THIS DRAWING ISSUE HAS BEEN REVIEWED FOR

DA ISSUE

APPROVED BY: CA
CHECKED BY: CW
CLIENT: ANGLICARE CASTLE HILL

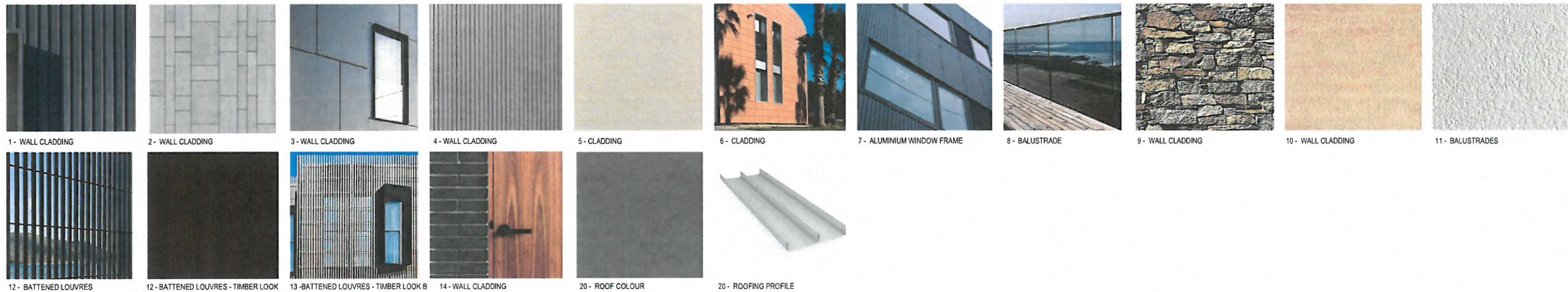


DRAWING
ELEVATIONS - BUILDING 9A

DATE	SCALE @ A1	DRAWN
10/17/18	1 : 200	RP
PROJECT No.	DISC.	DRAWING No.
2016056 A	DA-206	2
PROJECT 201656 WESTERN ROAD		

Lot 1, Pier 8-9, 23 Hickson Road
Walsh Bay New South Wales 2000 Australia
T 61 2 9290 2722 F 61 2 9290 1150
E sydney@jacksonteece.com
Jackson Teece Chartered Surveyors Pty Ltd
Trading as Jackson Teece
ABN 15 618 837 319
Nominated Architects: Damian Barker (8192), John Gow (6190), Daniel Hudson (8315)

JACKSON TEECE



AMENDMENTS

ISSUE	DESCRIPTION	APPROVED	DATE
1	DEVELOPMENT APPLICATION	DL	04/02/19
2	AMENDED DEVELOPMENT APPLICATION	CA	31/09/20

NOTES

- LANDSCAPE IS NOT SHOWN ON ELEVATIONS TO SHOW FULL ELEVATION VIEW. REFER TO LANDSCAPE DOCUMENTS FOR NEW & EXISTING PLANTING.
- MAXIMUM HEIGHT & CEILING HEIGHT CONTROL PLANES ARE NOT SHOWN ON ELEVATIONS. FOR ADDITIONAL HEIGHT PLANE INFORMATION REFER TO DA-410 & RELEVANT SECTIONS.
- COLOURS ON THE ELEVATIONS ARE INDICATIVE TO ASSIST INTERPRETATION OF MATERIAL DIFFERENCES. REFER TO THE MATERIAL PALETTE ON SHEET.
- ALL FACADE WINDOWS TO APARTMENTS ARE TYPICALLY DOUBLE-GLAZED AWNING WINDOWS, EXCEPT FOR GLAZED SLIDING DOOR & GLAZED FIXED PANELS.

LEGEND

- EXISTING GROUND HEIGHT AT THE FACE OF THE ELEVATION SHOWN
- LOT BOUNDARY LINES
- HEIGHT PLANES
- EXTENT OF BUILDING ENVELOPE OF CLASS 1 APPLICATION



0 5 10
SCALE 1:200

THIS DRAWING ISSUE HAS BEEN REVIEWED FOR

DA ISSUE

APPROVED BY: CA
CLIENT: ANGLICARE CASTLE HILL

CHECKED BY: CW
Anglicare

DRAWING
ELEVATIONS - BUILDING 9B

DATE: 10/17/18 SCALE @ A1: 1:200 DRAWN: RP
PROJECT No.: 2016056 A DISC: DA-207 ISSUE: 2
PROJECT: 201656 WESTERN ROAD

Lot 1, Pier 8-9, 23 Hickson Road
Walsh Bay New South Wales 2000 Australia
T 61 2 9290 2722 F 61 2 9290 1150
E sydney@jacksonteece.com
Jackson Teece Chartered Surveyors Pty Ltd
Trading as Jackson Teece
ABN 15 083 837 290
Nominated Architects: Damian Buckler (18192), John Goss (6790), Duane Hedges (8315)

JACKSON TEECE



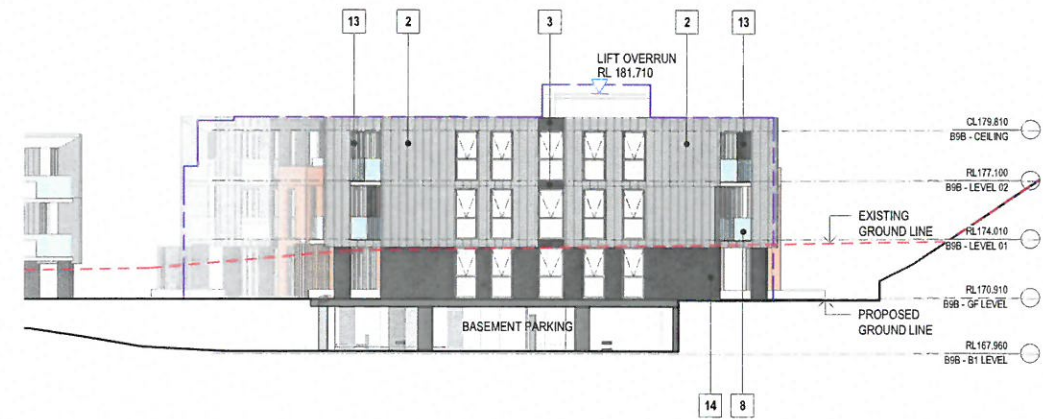
1 BUILDING 9B NORTH ELEVATION
SCALE 1:200



2 BUILDING 9B SOUTH ELEVATION
SCALE 1:200

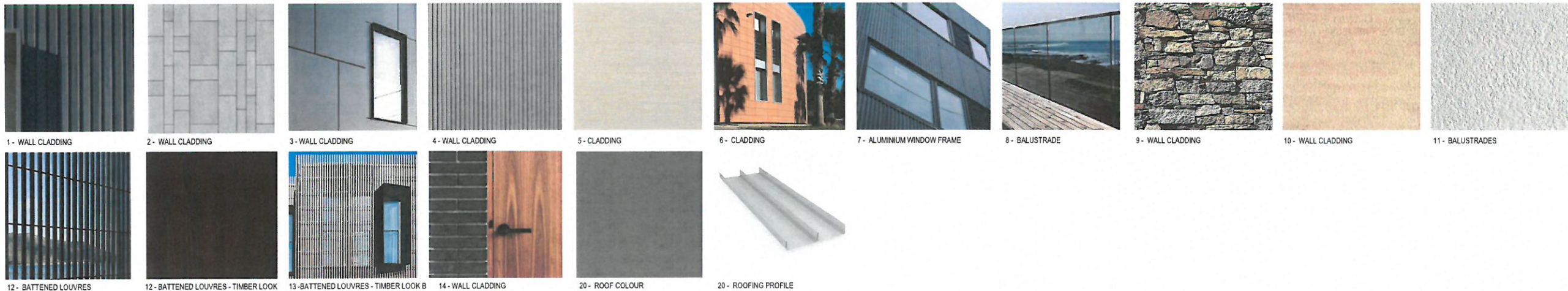


3 BUILDING 9B - EAST ELEVATION



4 BUILDING 9B - WEST ELEVATION

MATERIALS PALETTE



AMENDMENTS

ISSUE	DESCRIPTION	APPROVED	DATE
1	DEVELOPMENT APPLICATION	DL	04/02/19
2	AMENDED DEVELOPMENT APPLICATION	CA	31/08/20

NOTES

- LANDSCAPE IS NOT SHOWN ON ELEVATIONS TO SHOW FULL ELEVATION VIEW. REFER TO LANDSCAPE DOCUMENTS FOR NEW & EXISTING PLANTING.
- MAXIMUM HEIGHT & CEILING HEIGHT CONTROL PLANES ARE NOT SHOWN ON ELEVATIONS. FOR ADDITIONAL HEIGHT PLANE INFORMATION REFER TO DA-410 & RELEVANT SECTIONS.
- COLOURS ON THE ELEVATIONS ARE INDICATIVE TO ASSIST INTERPRETATION OF MATERIAL DIFFERENCES. REFER TO THE MATERIAL PALETTE ON SHEET.
- ALL FACADE WINDOWS TO APARTMENTS ARE TYPICALLY DOUBLE-GLAZED AWNING WINDOWS, EXCEPT FOR GLAZED SLIDING DOOR & GLAZED FIXED PANELS.

LEGEND

- EXISTING GROUND HEIGHT AT THE FACE OF THE ELEVATION SHOWN
- LOT BOUNDARY LINES
- HEIGHT PLANES
- EXTENT OF BUILDING ENVELOPE OF CLASS 1 APPLICATION



0 5 10
SCALE 1:200
THIS DRAWING ISSUE HAS BEEN REVIEWED FOR

DA ISSUE

APPROVED BY: CA
CLIENT: ANGLICARE CASTLE HILL
DRAWING NO.: 2016056 A DA-208
PROJECT: 201656 WESTERN ROAD

DATE: 10/17/18
SCALE @ A1: 1:200
DRAWN: RP

PROJECT No. 2016056 A
DISC. DA-208
ISSUE 2

PROJECT: 201656 WESTERN ROAD

Lot 1, Pier 8-9, 23 Hickson Road
Wah Bay New South Wales 2000 Australia
T 61 2 9290 2722 F 61 2 9290 1150
E sydney@jacksonteece.com
Jackson Teece Chartered Surveyors Pty Ltd
Trading as Jackson Teece
AUST 15188 827 290
Nominated Architects: Damian Barker (R192), John Gow (R190), Daniel Hudson (R315)

JACKSON TEECE



1 BUILDING 10 - NORTH ELEVATION



3 BUILDING 10 - EAST ELEVATION



2 BUILDING 10 - SOUTH ELEVATION



4 BUILDING 10 - WEST ELEVATION



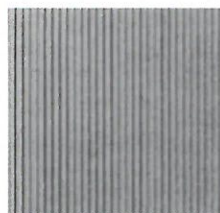
1 - WALL CLADDING



2 - WALL CLADDING



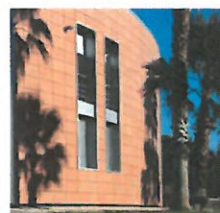
3 - WALL CLADDING



4 - WALL CLADDING



5 - CLADDING



6 - CLADDING



7 - ALUMINIUM WINDOW FRAME



8 - BALUSTRADE



9 - WALL CLADDING



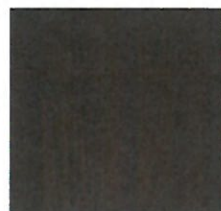
10 - WALL CLADDING



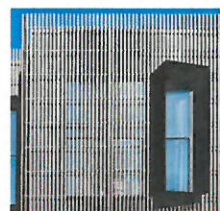
11 - BALUSTRADES



12 - BATTENED LOUVRES



12 - BATTENED LOUVRES - TIMBER LOOK



13 - BATTENED LOUVRES - TIMBER LOOK B



14 - WALL CLADDING



20 - ROOF COLOUR



20 - ROOFING PROFILE

MATERIALS PALETTE

AMENDMENTS

ISSUE	DESCRIPTION	APPROVED	DATE
1	DEVELOPMENT APPLICATION	DL	04/02/19
2	AMENDED DEVELOPMENT APPLICATION	CA	31/05/20

NOTES

- LANDSCAPE IS NOT SHOWN ON ELEVATIONS TO SHOW FULL ELEVATION VIEW. REFER TO LANDSCAPE DOCUMENTS FOR NEW & EXISTING PLANTING.
- MAXIMUM HEIGHT & CEILING HEIGHT CONTROL PLANES ARE NOT SHOWN ON ELEVATIONS. FOR ADDITIONAL HEIGHT PLANE INFORMATION REFER TO DA-410 & RELEVANT SECTIONS.
- COLOURS ON THE ELEVATIONS ARE INDICATIVE TO ASSIST INTERPRETATION OF MATERIAL DIFFERENCES. REFER TO THE MATERIAL PALETTE ON SHEET.
- ALL FACADE WINDOWS TO APARTMENTS ARE TYPICALLY DOUBLE-GLAZED AWNING WINDOWS, EXCEPT FOR GLAZED SLIDING DOOR & GLAZED FIXED PANELS.

LEGEND

- EXISTING GROUND HEIGHT AT THE FACE OF THE ELEVATION SHOWN
- LOT BOUNDARY LINES
- HEIGHT PLANES
- EXTENT OF BUILDING ENVELOPE OF CLASS 1 APPLICATION



0 5 10
SCALE 1:200
THIS DRAWING ISSUE HAS BEEN REVIEWED FOR

DA ISSUE

APPROVED BY: CA
CLIENT: ANGLICARE CASTLE HILL
CHECKED BY: CW
DRAWING ELEVATIONS - BUILDING 13

DATE: 10/17/18 SCALE @ A1: 1:200 DRAWN: RP
PROJECT No.: 2016056 A DISC.: DA-209 ISSUE: 2
PROJECT: 201656 WESTERN ROAD

Lot 1, Pier 8-9, 23 Hickson Road
Wahia Bay New South Wales 2000 Australia
T 61 2 9290 2722 F 61 2 9290 1150
E sydney@jacksonteece.com
Jackson Teece Chesterman Wilho Pty Ltd
Trading as Jackson Teece
ABN 15 083 837 290
Nominated Architects: Damian Barker (6190), John Gow (6190), Daniel Hudson (615)

JACKSON TEECE



1 BUILDING 13 - NORTH-WEST ELEVATION



3 BUILDING 13 - NORTH-EAST ELEVATION



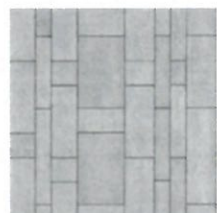
2 BUILDING 13 - SOUTH-EAST ELEVATION



4 BUILDING 13 - SOUTH-WEST ELEVATION



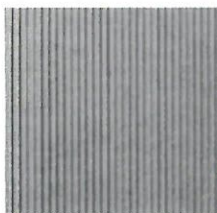
1 - WALL CLADDING



2 - WALL CLADDING



3 - WALL CLADDING



4 - WALL CLADDING



5 - CLADDING



6 - CLADDING



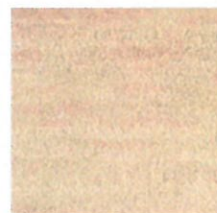
7 - ALUMINIUM WINDOW FRAME



8 - BALUSTRADE



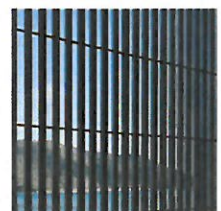
9 - WALL CLADDING



10 - WALL CLADDING



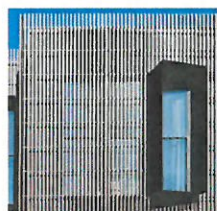
11 - BALUSTRADES



12 - BATTERED LOUVRES



12 - BATTERED LOUVRES - TIMBER LOOK



13 - BATTERED LOUVRES - TIMBER LOOK B



14 - WALL CLADDING



20 - ROOF COLOUR



20 - ROOFING PROFILE

MATERIALS PALETTE

AMENDMENTS

ISSUE	DESCRIPTION	APPROVED	DATE
1	DEVELOPMENT APPLICATION	DL	04/02/19
2	AMENDED DEVELOPMENT APPLICATION	CA	31/08/20

NOTES

- LANDSCAPE IS NOT SHOWN ON ELEVATIONS TO SHOW FULL ELEVATION VIEW. REFER TO LANDSCAPE DOCUMENTS FOR NEW & EXISTING PLANTING.
- MAXIMUM HEIGHT & CEILING HEIGHT CONTROL PLANES ARE NOT SHOWN ON ELEVATIONS. FOR ADDITIONAL HEIGHT PLANE INFORMATION REFER TO DA-110 & RELEVANT SECTIONS.
- COLOURS ON THE ELEVATIONS ARE INDICATIVE TO ASSIST INTERPRETATION OF MATERIAL DIFFERENCES. REFER TO THE MATERIAL PALETTE ON SHEET.
- ALL FACADE WINDOWS TO APARTMENTS ARE TYPICALLY DOUBLE-GLAZED AWNING WINDOWS, EXCEPT FOR GLAZED SLIDING DOOR & GLAZED FIXED PANELS.

LEGEND

- EXISTING GROUND HEIGHT AT THE FACE OF THE ELEVATION SHOWN
- LOT BOUNDARY LINES
- HEIGHT PLANES
- EXTENT OF BUILDING ENVELOPE OF CLASS 1 APPLICATION



0 5 10
SCALE 1:200
THIS DRAWING ISSUE HAS BEEN REVIEWED FOR

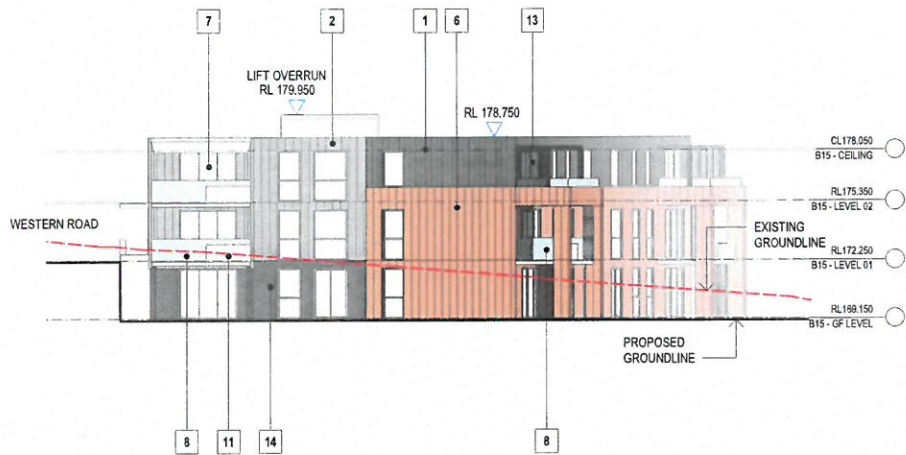
DA ISSUE

APPROVED BY: CA
CLIENT: ANGLICARE CASTLE HILL
CHECKED BY: CW
DRAWING: ELEVATIONS - BUILDING 15

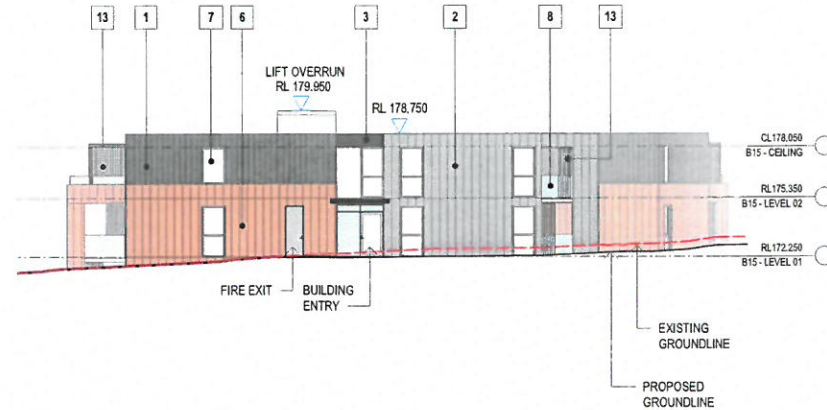
DATE: 10/17/18 SCALE @ A1: 1:200 DRAWN: RP
PROJECT No.: 2016056 A DISC.: DA-210 ISSUE: 2
PROJECT: 201656 WESTERN ROAD

Lot 1, Pier 8-9, 23 Hickson Road
Walsh Bay New South Wales 2000 Australia
T 61 2 9290 2722 F 61 2 9290 1150
E sydney@jacksonteece.com
Jackson Teece Chesterman Willis Pty Ltd
Trading as Jackson Teece
ABN 15 083 897 390
Nominated Architects: Damien Barker (8192), John Gow (5796), Daniel Hodson (8315)

JACKSON TEECE



1 BUILDING 15 - NORTH-EAST ELEVATION



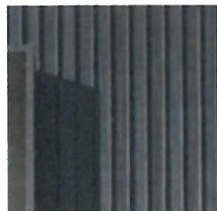
3 BUILDING 15 - SOUTH-EAST ELEVATION



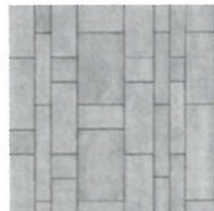
2 BUILDING 15 - SOUTH-WEST ELEVATION



4 BUILDING 15 - NORTH-WEST ELEVATION



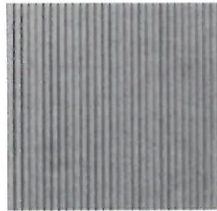
1 - WALL CLADDING



2 - WALL CLADDING



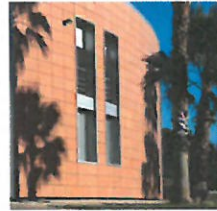
3 - WALL CLADDING



4 - WALL CLADDING



5 - CLADDING



6 - CLADDING



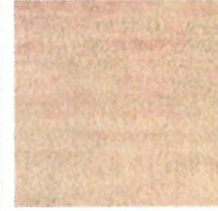
7 - ALUMINIUM WINDOW FRAME



8 - BALUSTRADE



9 - WALL CLADDING



10 - WALL CLADDING



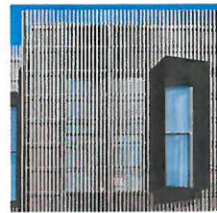
11 - BALUSTRADES



12 - BATTENED LOUVRES



12 - BATTENED LOUVRES - TIMBER LOOK



13 - BATTENED LOUVRES - TIMBER LOOK B



14 - WALL CLADDING



20 - ROOF COLOUR



20 - ROOFING PROFILE

AMENDMENTS

ISSUE	DESCRIPTION	APPROVED	DATE
1	DEVELOPMENT APPLICATION	DL	04/02/19
2	AMENDED DEVELOPMENT APPLICATION	CA	31/09/20

NOTES

- LANDSCAPE IS NOT SHOWN ON ELEVATIONS TO SHOW FULL ELEVATION VIEW. REFER TO LANDSCAPE DOCUMENTS FOR NEW & EXISTING PLANTING.
- MAXIMUM HEIGHT & CEILING HEIGHT CONTROL PLANES ARE NOT SHOWN ON ELEVATIONS. FOR ADDITIONAL HEIGHT PLANE INFORMATION REFER TO DA-410 & RELEVANT SECTIONS.
- COLOURS ON THE ELEVATIONS ARE INDICATIVE TO ASSIST INTERPRETATION OF MATERIAL DIFFERENCES. REFER TO THE MATERIAL PALETTE ON SHEET.
- ALL FACADE WINDOWS TO APARTMENTS ARE TYPICALLY DOUBLE-GLAZED AWNING WINDOWS, EXCEPT FOR GLAZED SLIDING DOOR & GLAZED FIXED PANELS.

LEGEND

- EXISTING GROUND HEIGHT AT THE FACE OF THE ELEVATION SHOWN
- LOT BOUNDARY LINES
- HEIGHT PLANES
- EXTENT OF BUILDING ENVELOPE OF CLASS 1 APPLICATION



0 5 10
SCALE 1:200
THIS DRAWING ISSUE HAS BEEN REVIEWED FOR

DA ISSUE

APPROVED BY: CA
CLIENT: ANGLICARE CASTLE HILL
DRAWING: ELEVATIONS - BUILDING 16

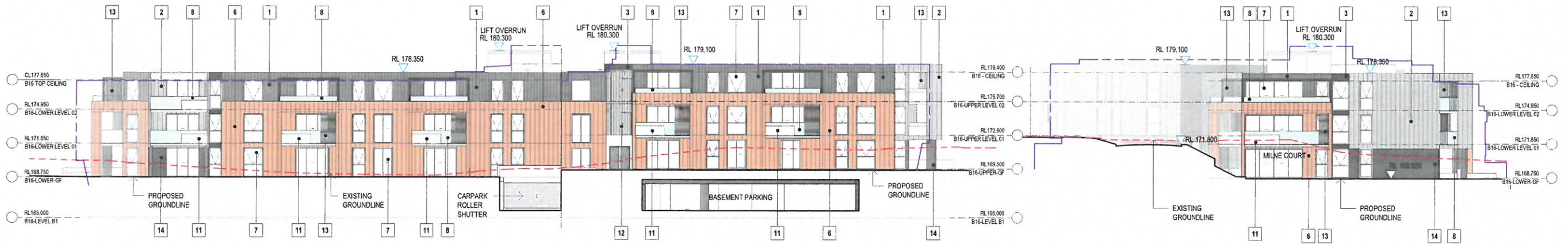
DATE: 10/17/18
SCALE @ A1: 1:200
DRAWN: RP

PROJECT No.: 2016056 A
DISC.: DA-211
ISSUE: 2

PROJECT: 201656 WESTERN ROAD

Lot 1, Pier 8-9, 23 Hickson Road
Walsh Bay New South Wales 2000 Australia
T 61 2 9290 2722 F 61 2 9290 1150
E sydney@jacksonteece.com
Jackson Teece Chartered Surveyors Pty Ltd
Trading as Jackson Teece
ABN 15 618 137 199
Nominated Architects: Damian Barker (R192), John Gow (R190), Daniel Hodson (R315)

JACKSON TEECE



1 BUILDING 16 - NORTH ELEVATION
SCALE 1:200

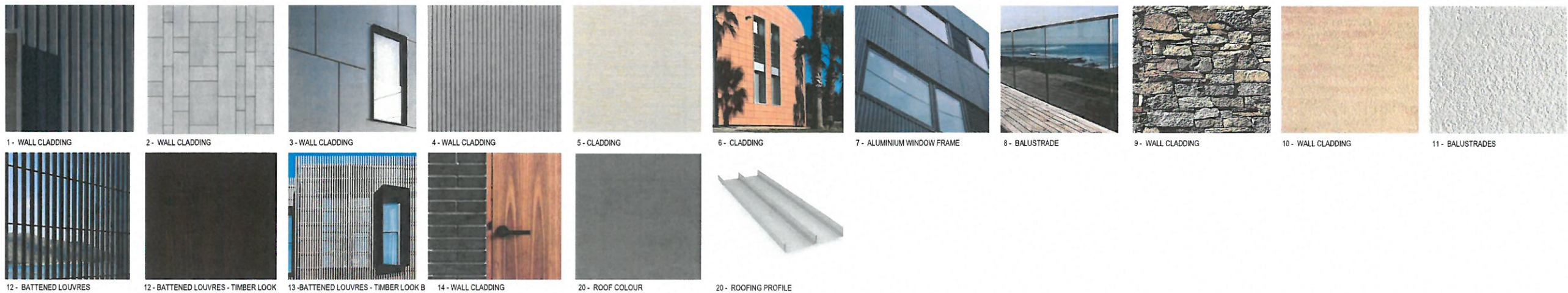
3 BUILDING 16 - EAST ELEVATION
SCALE 1:200



2 BUILDING 16 - SOUTH ELEVATION



4 BUILDING 16 - SOUTHWEST ELEVATION



AMENDMENTS

ISSUE	DESCRIPTION	APPROVED	DATE
1	DEVELOPMENT APPLICATION	DL	04/02/19
2	AMENDED DEVELOPMENT APPLICATION	CA	31/06/20

NOTES

- LANDSCAPE IS NOT SHOWN ON ELEVATIONS TO SHOW FULL ELEVATION VIEW. REFER TO LANDSCAPE DOCUMENTS FOR NEW & EXISTING PLANTING.
- MAXIMUM HEIGHT & CEILING HEIGHT CONTROL PLANES ARE NOT SHOWN ON ELEVATIONS. FOR ADDITIONAL HEIGHT PLANE INFORMATION REFER TO DA-410 & RELEVANT SECTIONS.
- COLOURS ON THE ELEVATIONS ARE INDICATIVE TO ASSIST INTERPRETATION OF MATERIAL DIFFERENCES. REFER TO THE MATERIAL PALETTE ON SHEET.
- ALL FACADE WINDOWS TO APARTMENTS ARE TYPICALLY DOUBLE-GLAZED AWNING WINDOWS, EXCEPT FOR GLAZED SLIDING DOOR & GLAZED FIXED PANELS.

LEGEND

- EXISTING GROUND HEIGHT AT THE FACE OF THE ELEVATION SHOWN
- LOT BOUNDARY LINES
- HEIGHT PLANES
- EXTENT OF BUILDING ENVELOPE OF CLASS 1 APPLICATION



0 5 10
SCALE 1:200
THIS DRAWING ISSUE HAS BEEN REVIEWED FOR

DA ISSUE

APPROVED BY: CA
CHECKED BY: CW
CLIENT: ANGLICARE CASTLE HILL
DRAWING ELEVATIONS - BUILDING 17

DATE: 10/17/18
SCALE @ A1: 1:200
DRAWN: RP

PROJECT No. 2016056 A
DISC. DA-213
ISSUE 2

PROJECT: 201656 WESTERN ROAD

Lot 1, Pier 8-9, 23 Hickson Road
Walsh Bay New South Wales 2000 Australia
T 61 2 9290 2722 F 61 2 9290 1150
E: sydney@jacksonteece.com
Jackson Teece Chartered Surveyors Pty Ltd
Trading as Jackson Teece
ABN 15 614 837 914
Nominated Architects: Damien Barker (6195), John Cow (6790), Daniel Hodson (6315)

JACKSON TEECE



1 BUILDING 17 - NORTH ELEVATION



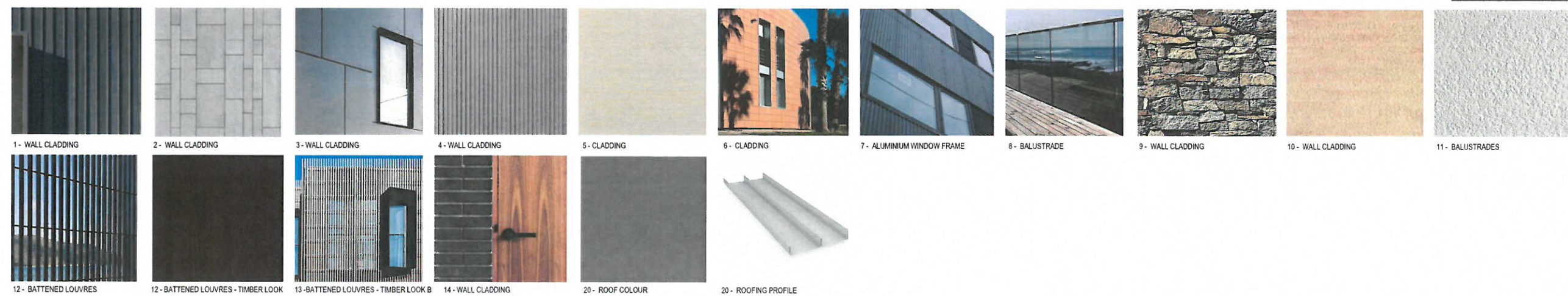
3 BUILDING 17 - EAST ELEVATION



2 BUILDING 17 - SOUTH ELEVATION



4 BUILDING 17 - WEST ELEVATION



AMENDMENTS

ISSUE	DESCRIPTION	APPROVED	DATE
1	DEVELOPMENT APPLICATION	DL	04/02/19
2	AMENDED DEVELOPMENT APPLICATION	CA	31/08/20

NOTES

- LANDSCAPE IS NOT SHOWN ON ELEVATIONS TO SHOW FULL ELEVATION VIEW. REFER TO LANDSCAPE DOCUMENTS FOR NEW & EXISTING PLANTING.
- MAXIMUM HEIGHT & CEILING HEIGHT CONTROL PLANES ARE NOT SHOWN ON ELEVATIONS. FOR ADDITIONAL HEIGHT PLANE INFORMATION REFER TO DA-410 & RELEVANT SECTIONS.
- COLOURS ON THE ELEVATIONS ARE INDICATIVE TO ASSIST INTERPRETATION OF MATERIAL DIFFERENCES. REFER TO THE MATERIAL PALETTE ON SHEET.
- ALL FACADE WINDOWS TO APARTMENTS ARE TYPICALLY DOUBLE-GLAZED AWNING WINDOWS, EXCEPT FOR GLAZED SLIDING DOOR & GLAZED FIXED PANELS.

LEGEND

- EXISTING GROUND HEIGHT AT THE FACE OF THE ELEVATION SHOWN
- LOT BOUNDARY LINES
- HEIGHT PLANES
- EXTENT OF BUILDING ENVELOPE OF CLASS 1 APPLICATION

KEY PLAN



0 5 10
SCALE 1:200
THIS DRAWING ISSUE HAS BEEN REVIEWED FOR

DA ISSUE

APPROVED BY: CA
CHECKED BY: CW
CLIENT: ANGLICARE CASTLE HILL



DRAWING ELEVATIONS - BUILDING 18 - SHEET 1

DATE: 10/17/18 SCALE @ A1: 1:200 DRAWN: RP

PROJECT No. 2016056 A DISCP. DRAWING No. DA-214 ISSUE: 2

PROJECT: 201656 WESTERN ROAD

Lot 1, Pier 8-9, 23 Hickson Road
Walsh Bay New South Wales 2000 Australia
T 61 2 9590 2722 F 61 2 9590 1150
E sydney@jacksonteece.com
Jackson Teece Chartered Surveyors Pty Ltd
Trading as Jackson Teece
ABN 15 085 827 299
Nominated Architects: Damien Barker (8192), John Gow (6790), Denise Hudson (8315)

JACKSON TEECE



1 BUILDING 18 NORTH ELEVATION - NEW ACCESS ROAD
SCALE 1:200

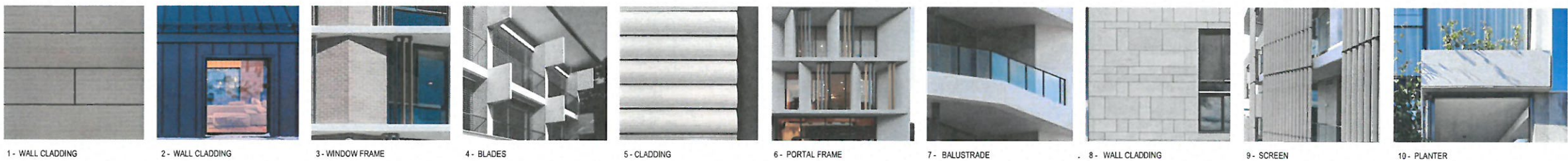


2 BUILDING 18 NORTH WEST ELEVATION - OLD NORTHERN ROAD
SCALE 1:200



3 BUILDING 18 SOUTH WEST ELEVATION - OLD NORTHERN ROAD
SCALE 1:200

RACF MATERIALS PALETTE



AMENDMENTS

ISSUE	DESCRIPTION	APPROVED	DATE
1	DEVELOPMENT APPLICATION	DL	04/02/19
2	AMENDED DEVELOPMENT APPLICATION	CA	31/08/20

NOTES

- LANDSCAPE IS NOT SHOWN ON ELEVATIONS TO SHOW FULL ELEVATION VIEW. REFER TO LANDSCAPE DOCUMENTS FOR NEW & EXISTING PLANTING.
- MAXIMUM HEIGHT & CEILING HEIGHT CONTROL PLANES ARE NOT SHOWN ON ELEVATIONS. FOR ADDITIONAL HEIGHT PLANE INFORMATION REFER TO DA-410 & RELEVANT SECTIONS.
- COLOURS ON THE ELEVATIONS ARE INDICATIVE TO ASSIST INTERPRETATION OF MATERIAL DIFFERENCES. REFER TO THE MATERIAL PALETTE ON SHEET.
- ALL FACADE WINDOWS TO APARTMENTS ARE TYPICALLY DOUBLE-GLAZED AWNING WINDOWS, EXCEPT FOR GLAZED SLIDING DOOR & GLAZED FIXED PANELS.

LEGEND

- EXISTING GROUND HEIGHT AT THE FACE OF THE ELEVATION SHOWN
- LOT BOUNDARY LINES
- HEIGHT PLANES
- EXTENT OF BUILDING ENVELOPE OF CLASS 1 APPLICATION

KEY PLAN



0 5 10
SCALE 1:200
THIS DRAWING ISSUE HAS BEEN REVIEWED FOR

DA ISSUE

APPROVED BY: CA
CHECKED BY: CW
CLIENT
ANGELICARE CASTLE HILL



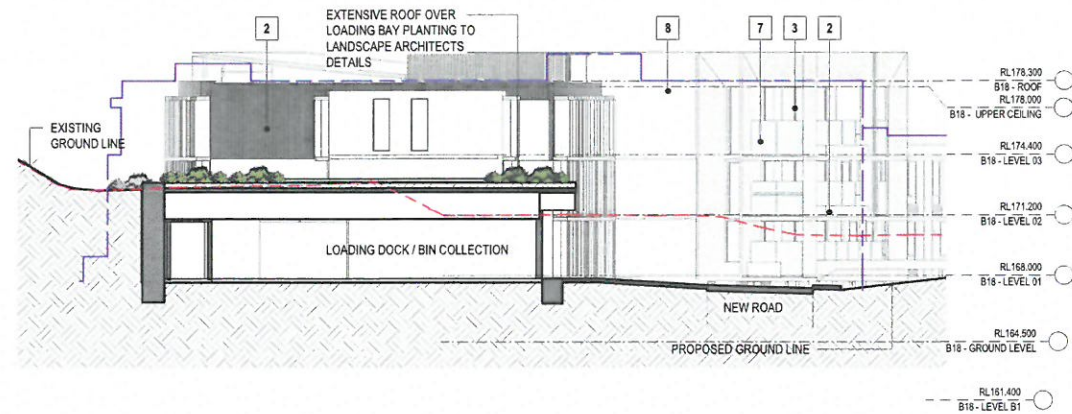
DRAWING
ELEVATIONS - BUILDING 18 - SHEET
2

DATE 12/10/18 SCALE @ A1 1:200 DRAWN CR/PR
PROJECT No. 2016056 A DISC. DA-215 ISSUE 2

PROJECT
201656 WESTERN ROAD

Lot 1, Pier 8-9, 23 Hickson Road
Walsh Bay New South Wales 2000 Australia
T 61 2 9290 2722 F 61 2 9290 1150
E sydney@jacksonteece.com
Jackson Teece Chartered Surveyors Pty Ltd
Trading as Jackson Teece
ABN 15 083 837 290
Nominated Architects: Damian Barker (0192), John Goe (0190), Daniel Hudson (0193)

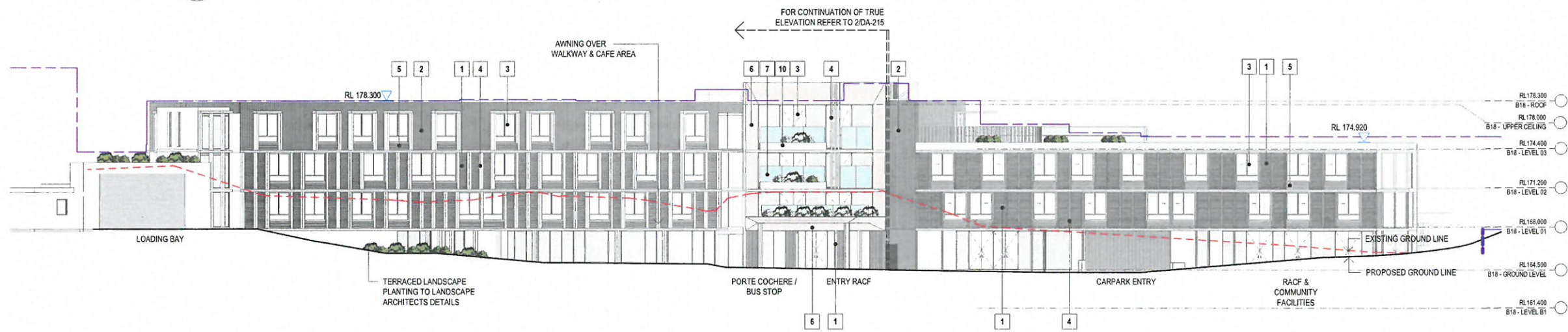
JACKSON TEECE



1 BUILDING 18 - SOUTH ELEVATION
SCALE 1:200



2 BUILDING 18 SOUTH EAST ELEVATION - CLARKE DRIVE
SCALE 1:200



3 BUILDING 18 NORTH EAST ELEVATION - CLARKE DRIVE
SCALE 1:200

RACF MATERIALS PALETTE



1 - WALL CLADDING 2 - WALL CLADDING 3 - WINDOW FRAME 4 - BLADES 5 - CLADDING 6 - PORTAL FRAME 7 - BALUSTRADE 8 - WALL CLADDING 9 - SCREEN 10 - PLANTER

AMENDMENTS

ISSUE	DESCRIPTION	APPROVED	DATE
1	DEVELOPMENT APPLICATION	DL	04/02/19
2	AMENDED DEVELOPMENT APPLICATION	CA	31/08/20

NOTES

- LANDSCAPE IS NOT SHOWN ON ELEVATIONS TO SHOW FULL ELEVATION VIEW. REFER TO LANDSCAPE DOCUMENTS FOR NEW & EXISTING PLANTING.
- MAXIMUM HEIGHT & CEILING HEIGHT CONTROL PLANES ARE NOT SHOWN ON ELEVATIONS. FOR ADDITIONAL HEIGHT PLANE INFORMATION REFER TO DA-410 & RELEVANT SECTIONS.
- COLOURS ON THE ELEVATIONS ARE INDICATIVE TO ASSIST INTERPRETATION OF MATERIAL DIFFERENCES. REFER TO THE MATERIAL PALETTE ON SHEET.
- ALL FACADE WINDOWS TO APARTMENTS ARE TYPICALLY DOUBLE-GLAZED AWNING WINDOWS, EXCEPT FOR GLAZED SLIDING DOOR & GLAZED FIXED PANELS.

LEGEND

- EXISTING GROUND HEIGHT AT THE FACE OF THE ELEVATION SHOWN
 - LOT BOUNDARY LINES
 - HEIGHT PLANES
 - EXTENT OF BUILDING ENVELOPE OF CLASS 1 APPLICATION
- KEY PLAN



0 5 10
SCALE 1:200

THIS DRAWING ISSUE HAS BEEN REVIEWED FOR

DA ISSUE

APPROVED BY: CA
CLIENT: ANGLICARE CASTLE HILL

CHECKED BY: CW

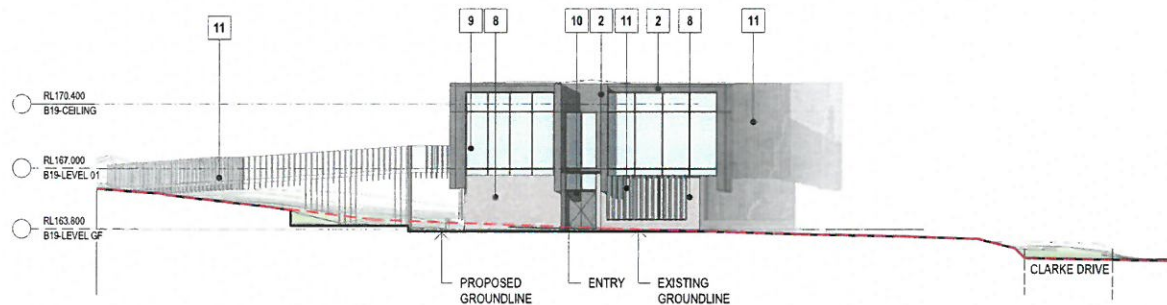


DRAWING ELEVATIONS - BUILDINGS 12 AND 19

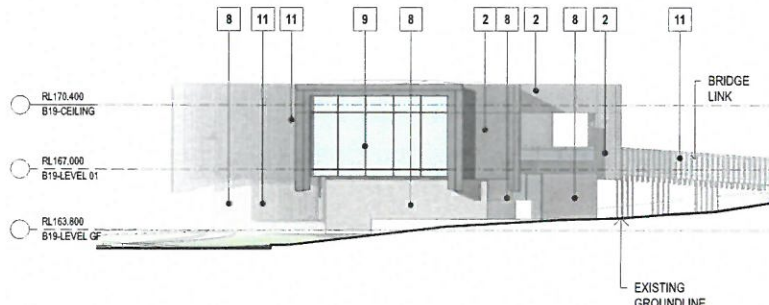
DATE	SCALE @ A1	DRAWN
11/26/18	1:200	RP
PROJECT No.	DISC.	DRAWING No.
2016056 A	DA-216	
PROJECT	ISSUE	
201656 WESTERN ROAD	2	

Lot 1, Pier 8-9, 23 Hickson Road
Walsh Bay New South Wales 2000 Australia
T 61 2 9290 9722 F 61 2 9290 1150
E sydney@jacksonteece.com
Jackson Teece Chartered Surveyors Pty Ltd
Trading as Jackson Teece
ABN 15 081 817 299
Nominated Architects: Damian Barker (8192), John Gow (6990), Daniel Hudson (8315)

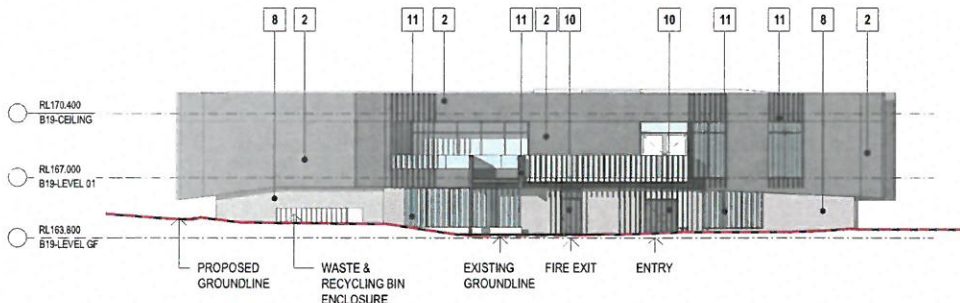
JACKSON TEECE



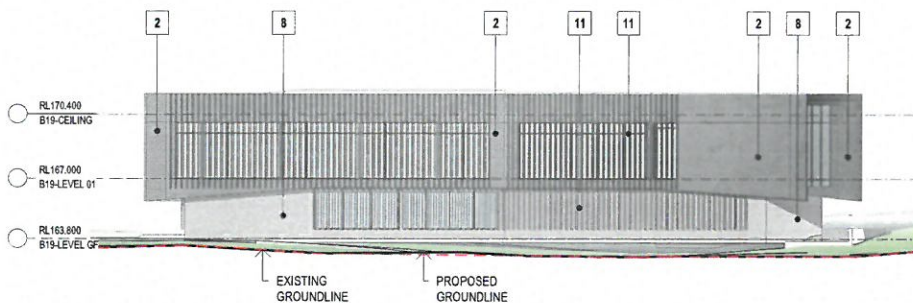
1 BUILDING 19 - NORTH ELEVATION
SCALE 1:200



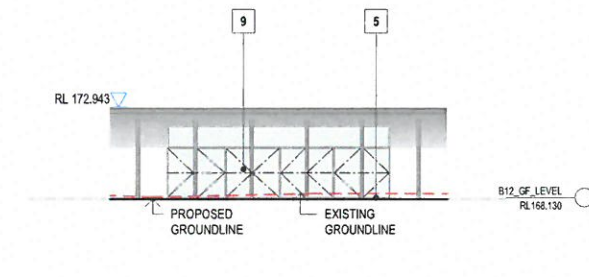
3 BUILDING 19 - SOUTH ELEVATION
SCALE 1:200



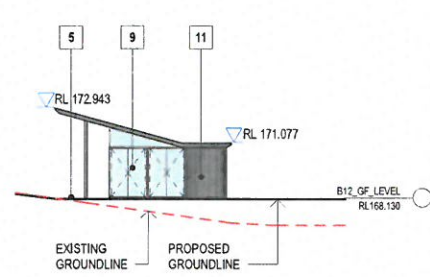
2 BUILDING 19 - EAST ELEVATION
SCALE 1:200



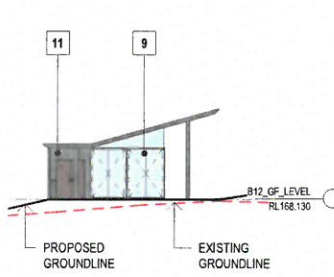
4 BUILDING 19 - WEST ELEVATION
SCALE 1:200



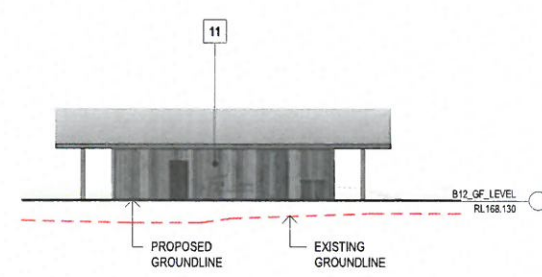
5 BUILDING 12 EAST ELEVATION
SCALE 1:200



6 BUILDING 12 NORTH ELEVATION
SCALE 1:200



7 BUILDING 12 SOUTH ELEVATION
SCALE 1:200



8 BUILDING 12 WEST ELEVATION
SCALE 1:200

MATERIALS PALETTE

